



IPC

BY TENNANT COMPANY

VACUUM CLEANERS - WET & DRY - LIGHT INDUSTRIAL

GC 2/90 W&D



POWER MAX

2400

W

WATER LIFT

2470

mmH₂O

AIRFLOW

420

m³/h

TANK CAPACITY

90

l



Take a look at GC 2/90 W&D in action

EXCLUSIVE FEATURES

- ▶ SANIFILTER
- ▶ INNOVATIVE GASKET
- ▶ STRONG HOOKS
- ▶ INDEPENDENT MOTORS WITH LIGHT SWITCHES
- ▶ SEALANT FLOATER & INTEGRATED ANTIFOAM SYSTEM
- ▶ DRAIN HOSE
- ▶ RELIABLE CONSTRUCTION FOR INTENSIVE USE
- ▶ DOUBLE STAGE MOTORS
- ▶ MICROFIBER BAG



MOST FREQUENTLY USE

HEALTHCARE



PHARMA INDUSTRY



AGRICULTURE



CONSTRUCTION



HEAVY INDUSTRY



INNOVATIONS



BLACK IS GREEN™



NEW BLEND FLEXIBLE HOSE

SPECS



ULTRA-SHOCKPROOF PLASTIC TANK



DRAIN HOSE



LARGE WHEELS WITH TYRES

TECHNICAL DATA

		GC 2/90 W&D
Code		ASD015052
PERFORMANCE		
Usage		WET&DRY
Motor		2x 2-stage
Power	W	2000-2400 max
Voltage	V	220-240
Water lift	mmH ₂ O	2470
Airflow	m ³ /h	420
Tank Capacity/Material	l	90/plastic (polyethylene)
Cable length	m	8,5
Sound Pressure Level (EN 60704-1; EN 60704-2-1; IEC 60335-2-69)	dB(A)	74
Diameter of inlet	mm	60
Diameter of accessories	mm	38
Dimensions (LxWxH)	mm	460x560x920
Weight	Kg	26,0

STANDARD EQUIPMENT

CODE: FTDP28733
DRY FILTERING KIT



CODE: FTDP41886
NYLON FILTER



CODE: TBFX01360
EXTRA STRONG FLEXIBLE HOSE 5 m Ø38 mm



CODE: MPVR00152
PLASTIC TUBE 50 cm Ø38 mm (FOR 1 PIECE)



CODE: LAFN28240
DOUBLE STEEL WAND Ø38 mm



CODE: SPPV37133
BRISTLE BRUSH Ø38 mm



CODE: SPPV00103
WET BRUSH Ø 38 mm



CODE: SPPV00156
FLAT LANCE Ø 38 mm



CODE: SPPV43052
ROUND BRUSH Ø 38 mm



CODE: MPVR43049
ADAPTER

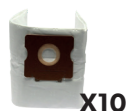


OPTIONAL ACCESSORIES

CODE: KTRI02912
PAPER BAG SET OF 10 PCS



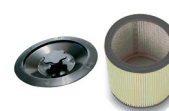
CODE: KTRI04796
MICROFIBER BAG SET OF 10 PCS



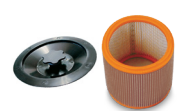
CODE: FTDP00223
PREFILTER PCB



CODE: FTDP00654
WASHABLE CARTRIDGE KIT W/RING AND GASKET



CODE: FTDP00657
HEPA CARTRIDGE KIT W/ RING AND GASKET



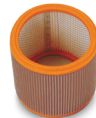
CODE: MPVR28723
FASTENING PLASTIC RING



CODE: FTDP44260
WASHABLE POLYESTER CARTRIDGE (AVAILABLE AS SPARE PART) 3.000 cm²



CODE: FTDP28844
HEPA H13 CARTRIDGE (AVAILABLE AS SPARE PART) 3.000 cm²



CODE: FTDP28755
MESH FILTER



CODE: SPPV01336
CARPET BRUSH Ø38 mm



CODE: KTRI06274
3D WET FILTERING KIT FOR MIXTURES



CODE: KTRI06214
DFS HEPA H14 KIT



CODE: LAFN11826
TELESCOPIC CHROMED DOUBLE WAND Ø38 mm



OPTIONAL SQUEEGEE KIT

CODE: KTRI05342

**INCREASE PRODUCTIVITY
RECOVERING LIQUIDS ON WIDE
SURFACES.**



EASY TO ASSEMBLY
Check out the tutorial
video to know more!



IP Cleaning Srl Viale Treviso 63 - 30026 Summaga di Portogruaro (VE) - Italy

Tel. +39 0421 205511 - Fax +39 0421 204227 | info@ipcworldwide.com - www.ipcworldwide.com